

Face Mask with Elastic Cord



You Will Need:

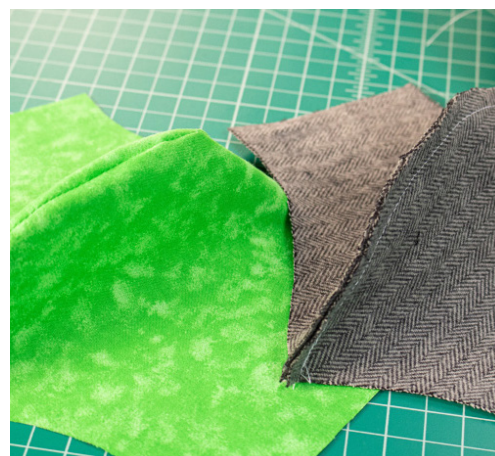
- >Quilting cotton fabric
- >Cotton flannel fabric
- >1/16" round elastic cord
- >Sewing machine with standard sewing supplies like pins and thread
- >Scissors
- >Pattern from eymm.com/masks/



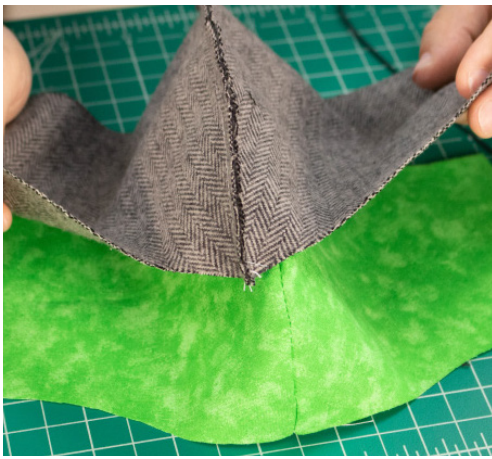
Fold the flannel in half with the nice side in. Position the cut-out pattern on top and cut out the pattern in both layers of flannel. Do the same for the quilting cotton.



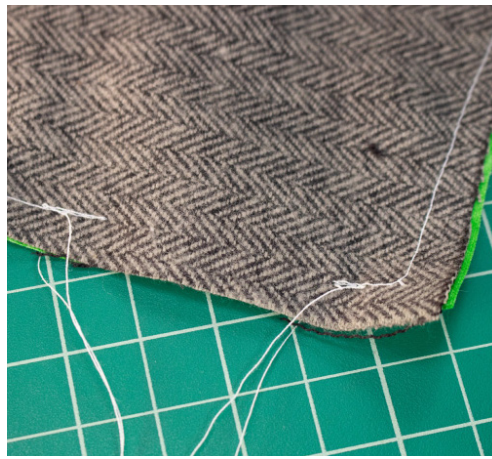
Leave the like layers facing each other with edges lined up. Take the quilting cotton and sew a hem on the longest side 1/4" in from the edge. Do the same with the flannel.



Unfold your fabrics along the seam. Turn the quilting cotton right side out so that hem is on the inside. Leave flannel with raw hem out.



Set flannel over the quilting cotton and pin around the edges.



Sew a 1/4" hem around the edge of the mask. Leave one short side open. This is important so you can turn the mask right side out.



Begin turning the mask right side out by pulling entire thing through the unstitched portion. This will hide the raw edges of the fabric inside the mask.



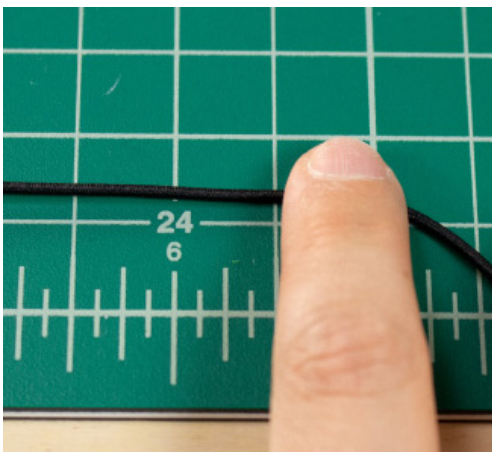
Tip: You can use a pin to pull the corners right side out.



Find the unstitched opening and pin it shut with the fabric edges folded inside.



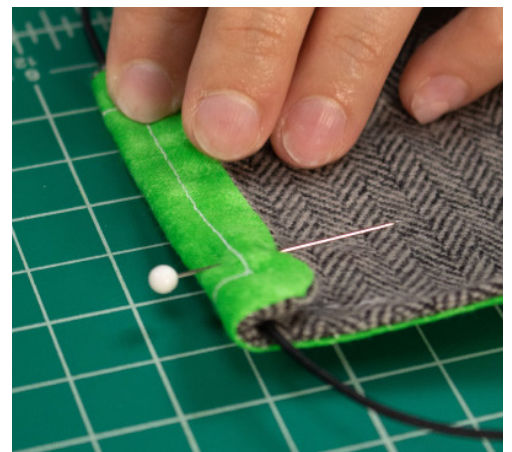
Sew around the entire mask, 1/4" in from the edge.



Cut a 26" length of elastic cord.



Tie the cord ends together with an overhand knot to form a loop.

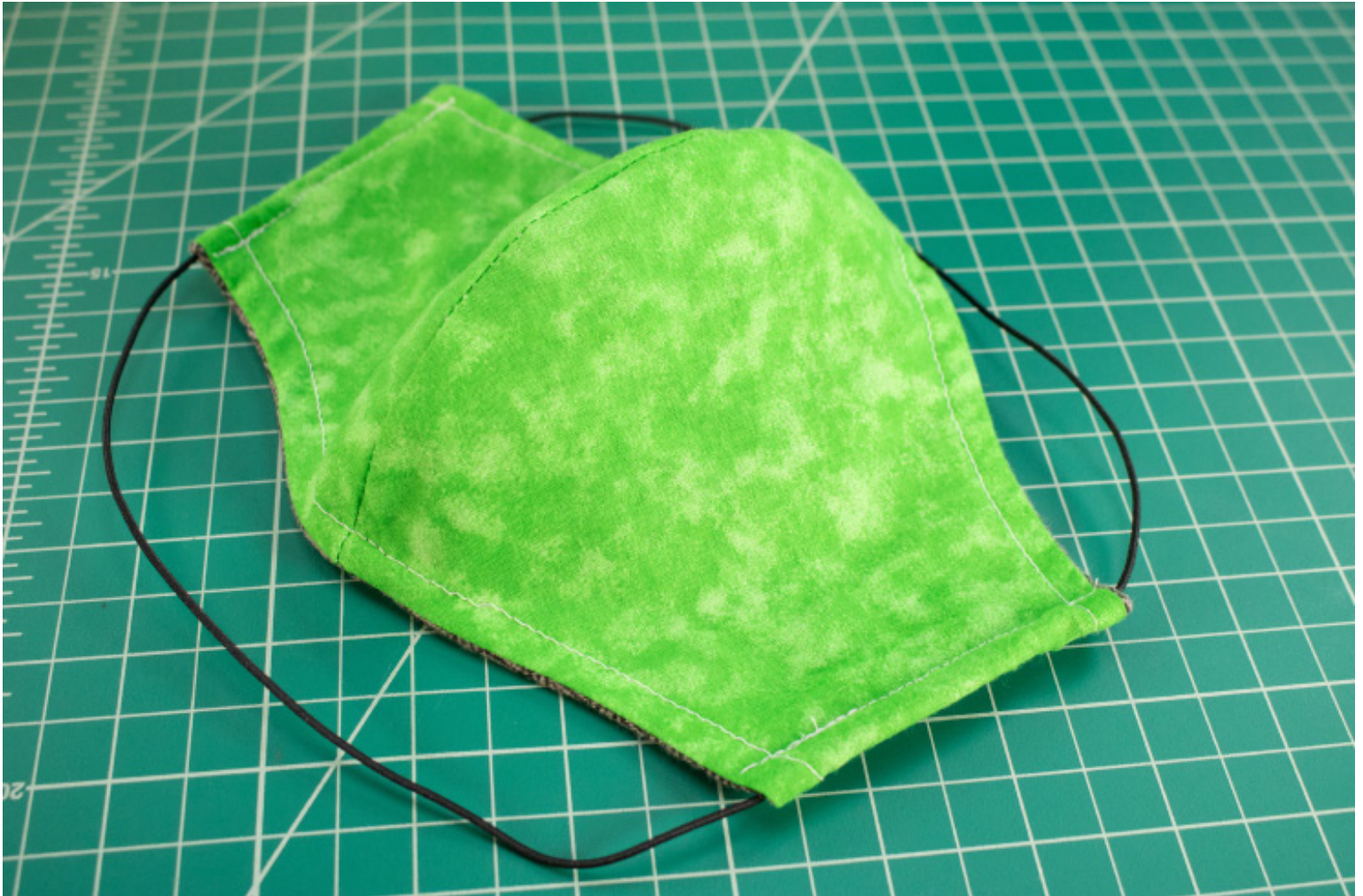


Fold in 1/2" on each side of the mask with the cord tucked inside. Pin shut.



Sew right over the top of your previous 1/4" hem. Be careful to not sew over the elastic cord

It should look like the picture at right when finished.



To wear the mask, position the bottom loop behind your neck, and the top loop just above your ears behind your head. The elastic cord should slide freely through the mask to allow for easy adjusting.